

Social and Community Stewardship

TTW and Community

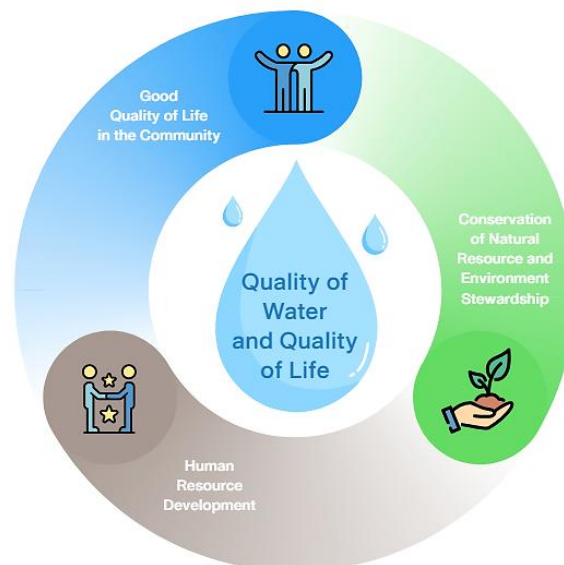
The Company believes that a tough society and community is the foundation for the development of the country to progress and keep up with the changes. Therefore, the Company aims to create sustainable prosperity nationwide and in all operation communities, focusing on sustainable development of quality of life and society.

“**Social Responsibility**” is the Company’s intention to adhere as a guideline for its business operations. The Company is dedicated to growing business parallel with social development and quality of life, focusing on tackling issues that affect people’s livelihoods to strengthen the economy and reduce social inequality.

The Company operates the business of producing and distributing tap water for PWA by using raw water from natural water sources, where “**water**” is a natural resource that may be scarce and affect the water use of the community in the future. In order to demonstrate social responsibility and environmental conservation along with sustainable business operations, the Company, therefore, continually organizes social and environmental stewardship activities with the community to create good relationships with the surrounding communities as a **good neighbor**.

Operating Guidelines

The Company is committed to being an organization driving the country’s economy and infrastructure up to the civilization through the creation of utilities according to international standards, along with social responsibility and environmental stewardship. The Company emphasizes the communities around the water treatment plant by supporting various activities covering education, occupation, sanitation as well as environmental stewardship the people’s quality of life in the community with three operating social aspects are as follows:



1. Human Resource Development

Community potential development is community empowerment by connecting between (People, Knowledge, Resources) to create a relationship consisting of “Learning, Management and Development” based on the principle of educating people to develop their knowledge and ideas to have potential and be self-reliant in all aspects. Therefore, community development is considered to develop human potential to be ready in all aspects, able to manage their own problems and needs, and be able to work together with the community and related agencies towards the ultimate goal of community development with happiness, good quality of life, strength, and sustainability.

2. Community Quality of Life in the Community

The Company emphasizes to promoting and developing the lifestyle of the community and society, serve the basic needs for good health and improving the base of well-being. In addition, it also focuses on enhancing the economic and social prosperity of the locality by applying local wisdom to create value of goods and services for the community to have sustainable income and self-reliance.

3. Conservation of Natural Resources and Environmental Stewardship

Conservation of natural resources and the environment means the wisely use of natural resources and the environment in small quantities to achieve maximum benefit, with regard to long use periods and least environmental damage including distribute the use of natural resources thoroughly. Nowadays, natural resources and the environment are deteriorating, consequently, the conservation of natural resources and the environment has a meaning as well as improving the quality of the environment as well.

Project Priority to the Company

1. Education Support Project

Operational guidelines

The Company supports the learning and development of skills, knowledge, and abilities as well as participate to reducing inequality education in Thai society. Therefore, the Company focuses on supporting education activities to reduce such impacts in order to be part of the Sustainable Development Goals regard solving problems and impacts from **Quality Education : SDG4** of the United Nations, thus established the education support project, such as providing scholarships to students in service areas, support research grants for students from various universities, transfer of knowledge and business experience, create well utilities, landscaping and environmental

improvement, school building renovation, including supporting modern teaching equipment for schools in underserved and underfunded areas to be able to rely on themselves, increase their educational capacity and to develop human resource competency, as well as adapting from the rapid social changes to cope with the changes, especially preparing the youth for quality growth and the potential to lead the country toward long-term economic prosperity.

2. Support Clean Drinking Water Project

Operational guidelines

The Company realizes the utilities system for the community as the schools and communities in the service area are still facing a shortage of clean water for consumption. Therefore, it focuses on supporting clean drinking water to reduce such impacts, to be part of the Sustainable Development Goals regard **solving problems and impacts from Clean Water and Sanitation: SDG6** of the United Nations. Therefore, the Company has established a project to support clean drinking water, for example, the production of bottled water with the “RO Drinking Water” or “Reverse Osmosis System” which has been certified for the production and product by the Food and Drug Administration (FDA) since 2008 to the present, to support activities in the public interest of stakeholders or communities in the service area. Moreover, the Company has installed a drinking water filtration system for the schools in the service areas where there is a shortage of clean water for consumption, thus reducing the cost of purchasing water and being able to provide services to nearby communities, including supporting tap water to the communities surrounding the water treatment plant that lack of water for consumption during drought situations.

3. Circular Economy Project

Operational guidelines







Due to the increasing impact of Solid waste and the shortage of global resources, the Company has realized the adoption of the circular economy as one of its sustainable development strategies including a guide for social operations and communities to be part of the Sustainable Development Goals regarding the **Responsible Consumption and Production : SDG12** of the United Nations. The Company believes that the efficient use of resources in accordance with the circular economy principle is the efficient use of natural resources, reducing unnecessary waste and the shortage of resources from reuse, to create value for society in long term. Therefore, the Company has established a circular economy project, such as establish the sludge mixed with food waste, research in collaboration between

TTW and Kasetsart University, and Laem Phak Bia Environmental Research and Development Project, due to the Royal Decree of King Rama 9 to change the behavior of Solid waste management at source, which is one of the real drivers of the circular economy, that is, Solid waste collecting and managing waste correctly and efficiently to bring as much waste back into the recycling process as possible, with a quality waste separation procedure to reduce the amount of contaminated Solid waste, create cooperation in the community according to the “Baworn” approach, including houses, temples, schools, with proper Solid waste management from the beginning linked to Solid waste management within the organization.

4. Climate Change Response Projects

Operational guidelines

Global warming has a wide-ranging impact on both climate change and disasters are increasingly affecting ecosystems and people’s livelihoods. Therefore, the Company focuses on mitigating such impacts to be part of achieving the Sustainable Development Goals regarding **Climate Action : SDG13** of the United Nations, the company has initiated projects to address climate change, including examples such as:

-  The "Care the Bear" project by the Stock Exchange of Thailand (SET).
-  Monitoring the growth of trees under the " the 1 Million Seeding to Create Watershed Forests" project.
-  Assessing greenhouse gas emissions from business processes.
-  Solar Rooftop projects at the Bang Len Water Treatment Plant, Krathum Ban Water Treatment Plant, and Mahachai Water Supply Station
-  The Floating Solar Cell project for Wastewater treatment system of Bang Pa-in Industrial Estate.
-  Low Emission Support Scheme Project (LESS), Thailand Greenhouse Gas Management Organization (Public Organization)

5. Water Conservation Project

Operational guidelines

“**Water**” is an essential component of human beings and the most necessary of life, it is also the source of living, such as plants and animals, which causes abundance for all living creatures. As the country’s leading tap water producer, we are committed to minimizing the impact of water shortage in both quantity and quality as part of achieving the United Nations Sustainable Development Goals (SDGS), **Clean water and sanitation : SDG6** . The company has implemented a water conservation project, including activities such as Tha Chin River care initiatives in collaboration with the "We Love Tha Chin River" association in Nakhon Pathom and local communities. Additionally, there is a project to restore the water quality of the Bang Sue Canal, aiming to conserve the Tha Chin River. The project has been successfully completed and delivered to the Raikhing Municipality.